

## ■ Pumping Capacity Chart

Pump Model	Power Source	Stage		Valve Type		Valve		Oil Delivery		Oil Required
		Single	Two	Single Acting	Double Acting	Manual	Solenoid	Low Pressure	High Pressure	
HP-180N	Manual	•		•		•		0.90 cc / stroke	0.90 cc / stroke	180 cc
HP-700A			•	•		•		12.26 cc / stroke	12.26 cc / stroke	720 cc
HF-700			•	•		•		12.2 cc / stroke	18 cc / stroke	705 cc
HYP-700FT			•	•		•		3.5 cc / stroke	2.0 cc / stroke	720 cc
HP-30S			•	•		•		12.2 cc / stroke	1.8 cc / stroke	3000 cc
HP-30MD			•		•	•		12.26 cc / stroke	2.26 cc / stroke	3000 cc
EP-30S	Electric	•		•			•	2.6L / min	0.32L / min	3000 cc
EP-76MS			•	•		•		3.9L / min	0.2L / min	8000 cc
EP-76MD			•		•	•		3.9L / min	0.2L / min	8000 cc
EP-76SS			•	•			•	3.9L / min	0.2L / min	8000 cc
EP-76SD			•		•		•	3.9L / min	0.2L / min	8000 cc
EP-200SD			2HP		•		•	10.5L / min	1L / min	20000 cc
EP-200MD			2HP		•	•		10.5L / min	1L / min	20000 cc
GHP-5	Gasoline / Petrol		6.5HP		•	•		13.4L / min	2.4L / min	9500 cc

## ■ Model No. HP-180N

Length : 320 mm

Weight : 3.7 kgs

## ■ Specifications:

Max. Pressure : 590 bar

Oil Required : 180 cc

## ■ Oil Delivery:

0.9 cc / stroke

## ■ Features:

- Ideal for our PNST-10 punch driver or any small remote heads requiring less than 180 cc oil volume.
- Bladder type oil reservoir allows operation in any position.
- Single stage pumping action.
- Not equipped with a relief valve.

## ■ Accessories:

1M hydraulic hose attached

### Note:

This pump does NOT have a relief valve. It can not be used with compressionheads requiring a relief valve to ensure a constant compression.



# PUMPS

## ■ Model No. HP-700A

Length : 595 mm

Weight : 9.0 kgs

## ■ Specifications:

Max. Pressure : 700 bar

Oil Required : 705 cc

## ■ Oil Delivery:

12.2 cc / stroke at low pressure

1.8 cc / stroke at high pressure

## ■ Features:

- Dual speed pump piston for rapid advance.
- Two stage pumping action
- External adjustable pressure setting up to 700 bar.
- Internal oil bladder type oil reservoir allows operation in any position.
- Replaceable Dropout Bypass Valve Cartridge for easy repair.
- Economical yet dependable hydraulic hand pump.

## ■ Accessories:

2M hydraulic hose attached



# PUMPS

**KuDos®**

Professional  
Hydraulic  
Tools

## ■ Model No. HF-700

Length : 694 mm

Weight : 9.4 kgs

## ■ Specifications:

Max. Pressure : 700 bar / 10000 psi

Oil Required : 705 cc

## ■ Oil Delivery:

10.6 cc / stroke at low pressure

1.6 cc / stroke at high pressure

## ■ Features:

- Dual speed pump piston for rapid advance.
- Two stage pumping action .
- External adjustable pressure setting up to 700 bar.
- Internal oil bladder type oil reservoir allows operation in any position.
- Replaceable Dropout Bypass Valve Cartridge for easy repair.
- Economical yet dependable hydraulic hand pump.
- To comply with ergonomic design for hand and feet use.

## ■ Accessories:

2M hydraulic hose attached



# PUMPS

## ■ Model No. **HYP-700FT**

Length : 720 mm

Weight : 12.0 kgs

## ■ Specifications:

Max. Pressure : 700 bar

Oil Required : 720 cc

## ■ Oil Delivery:

36.2 cc / stroke at low pressure

2.1 cc / stroke at high pressure

## ■ Features:

- Dual speed pump piston for rapid advance.
- Two stage pumping action.
- External adjustable pressure setting up to 700 bar.
- Internal oil bladder type oil reservoir allows operation in any position.
- Replaceable Dropout Bypass Valve Cartridge for easy repair.
- Economical yet dependable foot hydraulic pump.

## ■ Accessories:

2M hydraulic hose attached





# PUMPS

## ■ Model No. HP-30S

Length : 600 mm

Weight : 15.6 kgs

## ■ Specifications:

Max. Pressure : 700 bar / 10000 psi

Oil Required : 3000 cc

## ■ Oil Delivery:

12.26 cc / stroke at low pressure

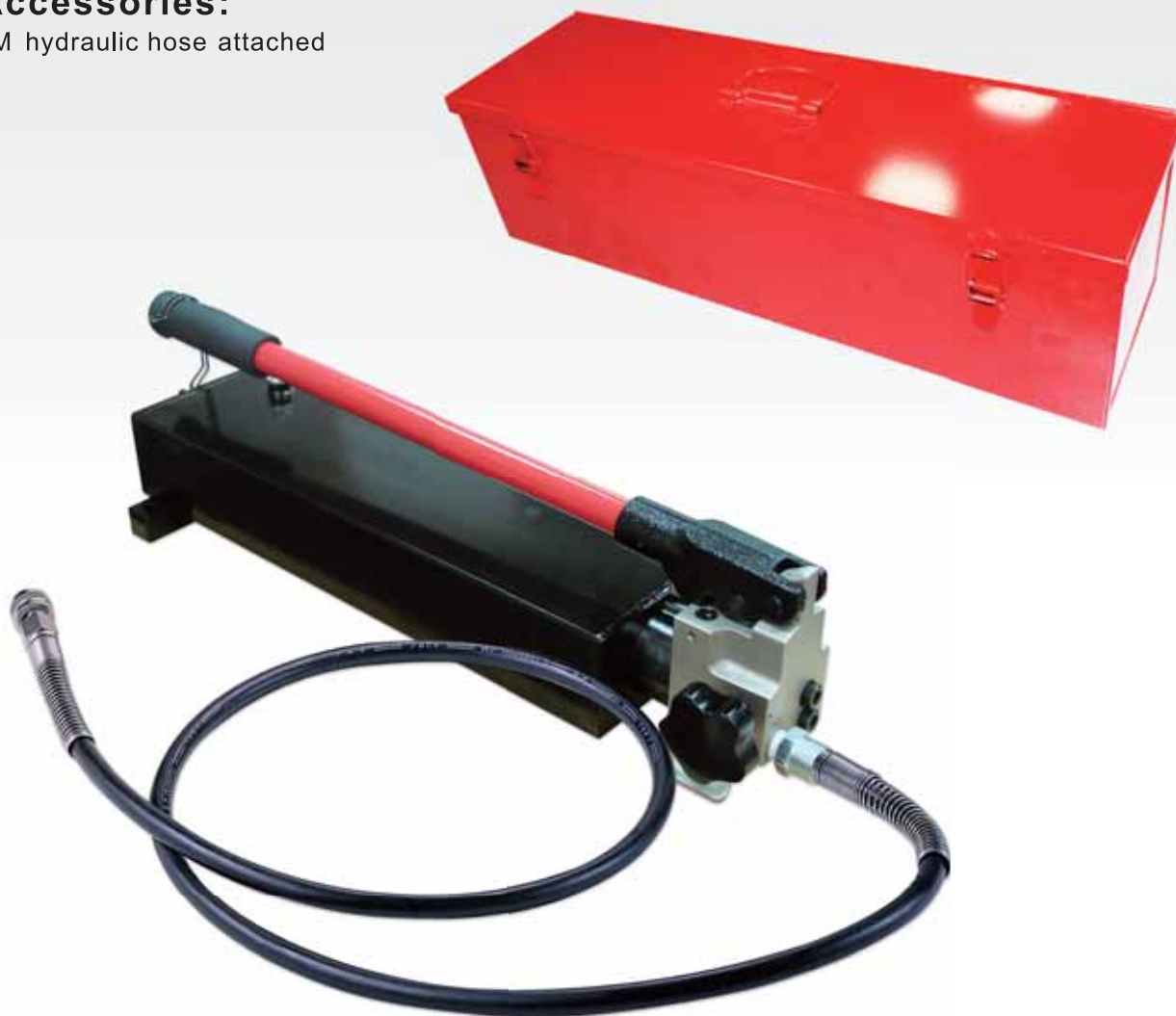
2.26 cc / stroke at high pressure

## ■ Features:

- Dual speed pump piston for rapid advance.
- Two stage pumping action .
- External adjustable pressure setting up to 700 bar.
- Economical yet dependable hydraulic hand pump.

## ■ Accessories:

2M hydraulic hose attached



# PUMPS

## ■ Model No. HP-30MD

Length : 745 mm

Weight : 18.4 kgs

## ■ Specifications:

Max. Pressure : 700 bar / 10000 psi

Oil Required : 3000 cc

## ■ Oil Delivery:

12.26 cc / stroke at low pressure

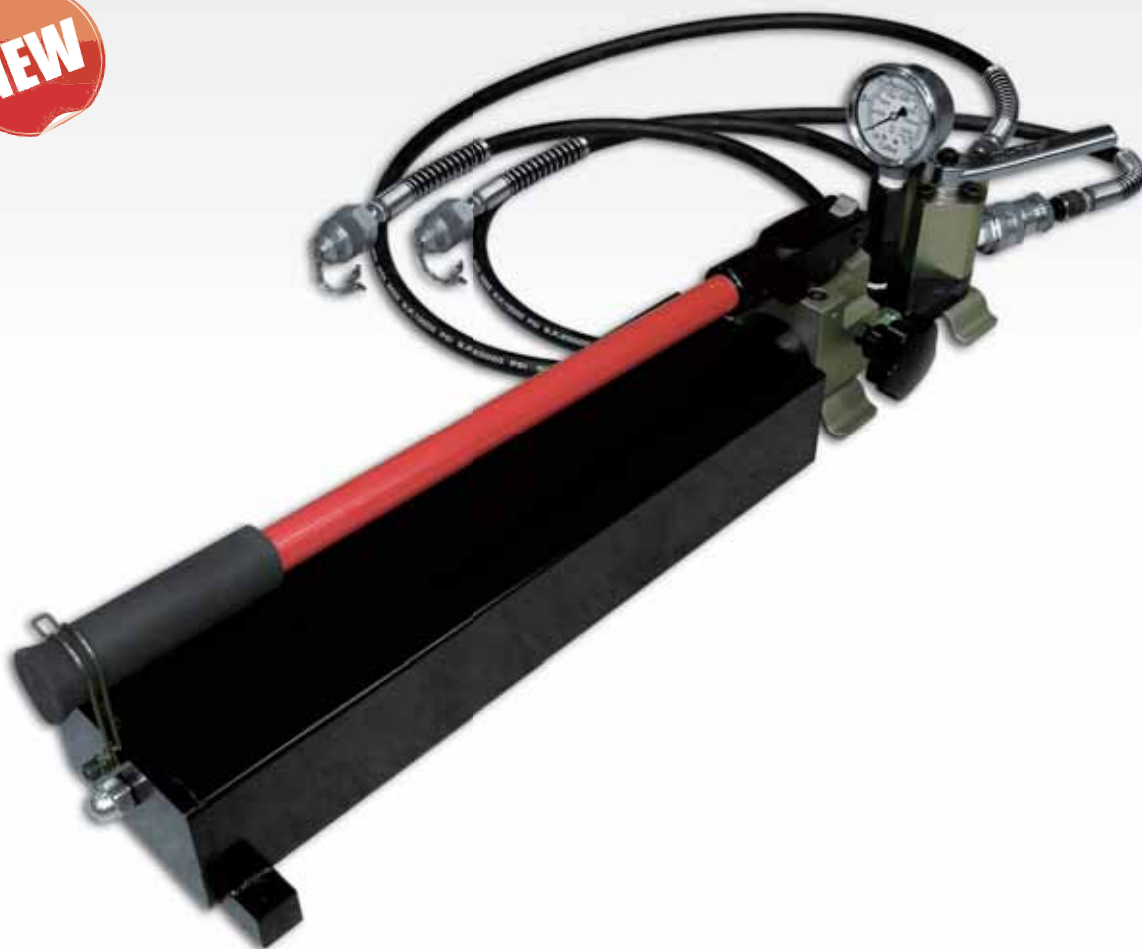
2.26 cc / stroke at high pressure

## ■ Features:

- Dual speed pump piston for rapid advance
- Two stage pumping action
- External adjustable pressure setting up to 700 bar
- Economical yet dependable hydraulic hand pump
- Attached with pressure gauge for pressure display

## ■ Accessories:

Hydraulic Hose should be ordered separately



## ■ Model No. EP-30S

Height : 374 mm

Weight : 18.0 kgs (w/o oil)

## ■ Specifications:

Max. Pressure : 700 bar

Oil Required : 3,000 cc

Input : Single phase 50/60Hz 110V 、 120V 、 220V 、 230V  
350W motor

## ■ Oil Delivery:

2.6 L / min at low pressure

0.32 L / min at high pressure

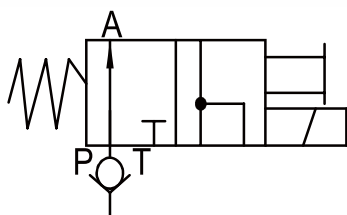
## ■ Features:

- Fully remote controlled, allows the operator to advance, hold or retract at any time.
- Single-stage pumping action.
- Cuts and crimps can be adjusted as necessary by stopping the advance or retract mode.
- 3/4 HP Heavy-Duty motor.
- Durable steel construction with built-in carrying handle.
- Low amperage requirement.
- Oil level is visible.

## ■ Accessories:

2M hydraulic hose attached

## ■ Hydraulic Symbol Table





# PUMPS

## ■ Model No. **EP-76MS**

Height : 480 mm

Weight : 20.0 kgs (w/o oil)

## ■ Specifications:

Max.Pressure : 700 bar

Oil Required : 8,000 cc

2 way, 2 position manual valve

Drive unit : 220V/AC or 100V/AC 50/60Hz 、 1/2Hp

## ■ Oil Delivery:

3.9 L / min at low pressure

0.2 L / min at high pressure

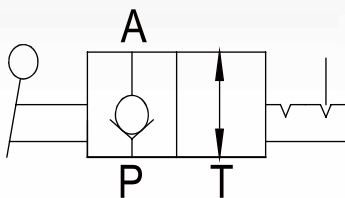
## ■ Features:

- With 5 meter remote control cable provides the user complete control to advance and retract.
- Two speed high performance.
- Equipped with single-phase, thermal **protected** induction motor to reduce noise level.
- **Pressure** holds at 700 bar, ideal for **maintenance** and construction.
- Equipped with large-capacity one piece metal oil tank.

## ■ Accessories:

Hydraulic Hose should be ordered separately.

## ■ Hydraulic Symbol Table



## ■ Model No. **EP-76MD**

Height : 480 mm

Weight : 25.0 kgs (w/o oil)

## ■ Specifications:

Max. Pressure : 700 bar

Oil Required : 8,000 cc

4 way, 3 position manuel valve

Drive unit : 220V/AC or 110V/AC 50/60Hz 、 1/2Hp

## ■ Oil Delivery:

3.9 L / min at low pressure

0.2 L / min at high pressure

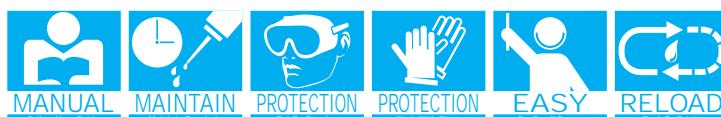
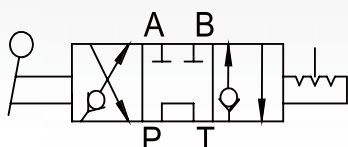
## ■ Features:

- With 5 meter remote control cable provides the user complete control to advance and retract.
- Two speed high performance.
- Equipped with a thermal protected induction motor to reduce noise level.
- Pressure holds at 700 bar, ideal for maintenance and construction.
- Equipped with large-capacity one piece metal oil tank.

## ■ Accessories:

Hydraulic Hose should be ordered separately.

## ■ Hydraulic Symbol Table



# PUMPS

## ■ Model No. **EP-76SS**

Height : 480 mm

Weight : 25.0 kgs (w/o oil)

## ■ Specifications:

Max. Pressure : 700 bar

Oil Required : 8,000 cc

3 way, 2 position solenoid valve

Drive unit : 220VAC 100V~120V 、 210V~240V 、 50 / 60Hz 、 1/2Hp

## ■ Oil Delivery:

3.9 L / min at low pressure

0.2 L / min at high pressure

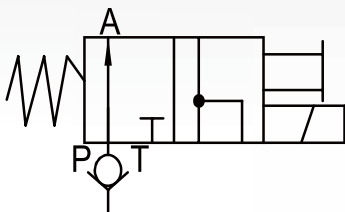
## ■ Features:

- With 5 meter remote control cable provides the user complete control to advance and retract.
- Two speed high performance.
- Equipped with single-phase, thermal protected induction motor to reduce noise level.
- Pressure holds at 700 bar, ideal for maintenance and construction.
- Equipped with large-capacity one piece metal oil tank.

## ■ Accessories:

Hydraulic Hose should be ordered separately.

## ■ Hydraulic Symbol Table



## ■ Model No. EP-76SD

Height : 480 mm

Weight : 25.0 kgs (w/o oil)

## ■ Specifications:

Max. Pressure : 700 bar

Oil Required : 8,000 cc

4 way, 3 position solenoid valve

Drive unit : 110V/AC or 240V/AC 50/60Hz 、 1/2Hp 、 3600 rpm

## ■ Oil Delivery:

3.9 L / min at low pressure

0.2 L / min at high pressure

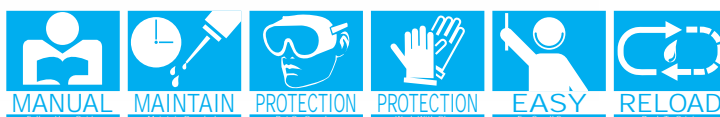
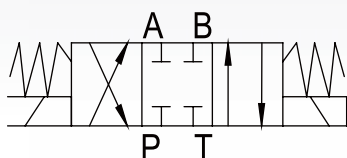
## ■ Features:

- With 5 meter remote control cable provides the user complete control to advance and retract.
- Two speed high performance.
- Equipped with a thermal protected induction motor to reduce noise level.
- Pressure holds at 700 bar, ideal for maintenance and construction.
- Equipped with large-capacity one piece metal oil tank.

## ■ Accessories:

Hydraulic Hose should be ordered separately.

## ■ Hydraulic Symbol Table



# PUMPS

## ■ Model No. **GHP-5**

Height : 590 mm

Weight : 58.0 kgs (with oil)

## ■ Specifications:

Max. Pressure : 700 bar

Oil Required : 9.5 L

Motor Size : 6.5 HP

Valve type : 4-way,3-position

Motor Manufacturer : Honda

Manually controlled engine

## ■ Oil Delivery:

13.4 L / min at low pressure

2.4 L / min at high pressure

## ■ Features:

- Pressure gauge can be located in upright position for better reading.
- Equipped with a 4-way 3-position manual valve to prevent the electric control valve being locked and not able to perform retire because of high temperature.
- Supplied with a rack with rollers.
- High efficiency and fast working gasoline pump.





# PUMPS



Professional  
Hydraulic  
Tools

## ■ Model No. EP-200SD

Height: 691 mm  
Weight: 79.0 kgs (w/o oil)

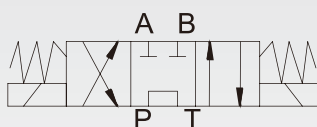
## ■ Specifications:

Max. Pressure: 700 bar / 10000 psi  
Oil Required: 20 L  
Motor : 2HP  
4 way, 3 position Solenoid Valve  
Input : 220V/230V

## ■ Oil Delivery:

10.5 L / min at low pressure  
1.0 L / min at high pressure

## ■ Hydraulic Symbol Table



• Test Gauge



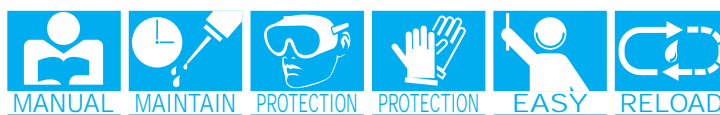
• Air-Cooled Heat Exchanger + Spin-On Return Filter



■ Standard Package



■ Optional Package



# PUMPS

## ■ Model No. EP-200MD

Height: 691 mm

Weight: 79.0 kg (w/o oil)

## ■ Specifications:

Max. Pressure: 700 bar / 10000 psi

Oil Required: 20 L

Motor : 2HP

4 way, 3 position Manual Valve

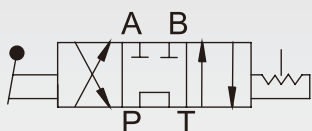
Input : 220V / 230V

## ■ Oil Delivery:

10.5 L / min at low pressure

1.0 L / min at high pressure

## ■ Hydraulic Symbol Table



■ Standard Package

## ■ Features:

- With 5 Meter Remote control cable provides the user complete control to advance and retract.
- Easy to use by one button control to advance and retract pumping .
- Two stage pumping of high performance.
- Equipped with single-phase, thermal-protected motor to reduce noise level.
- Equipped with large capacity one piece metal oil tank.

## ■ Accessories:

Hydraulic hose & Cooler Device : single-phase 220V / Flow : 30L/min should be ordered separately.



● Air-Cooled Heat Exchanger + Spin-On Return Filter



■ Optional Package

